



PE RESTRAINT VALVES & FITTINGS



Personalised service, distribution across Australia, New Zealand and Asia Pacific regions with a comprehensive product range to match, you're in expert hands.



TABLE OF CONTENTS

| | |
|----------------------------------|---|
| PE Restraint Joint _____ | 1 |
| Advantages _____ | 3 |
| Flange Adaptors _____ | 4 |
| Couplings _____ | 5 |
| Resilient Seat Gate Valves _____ | 6 |
| Notes _____ | 7 |





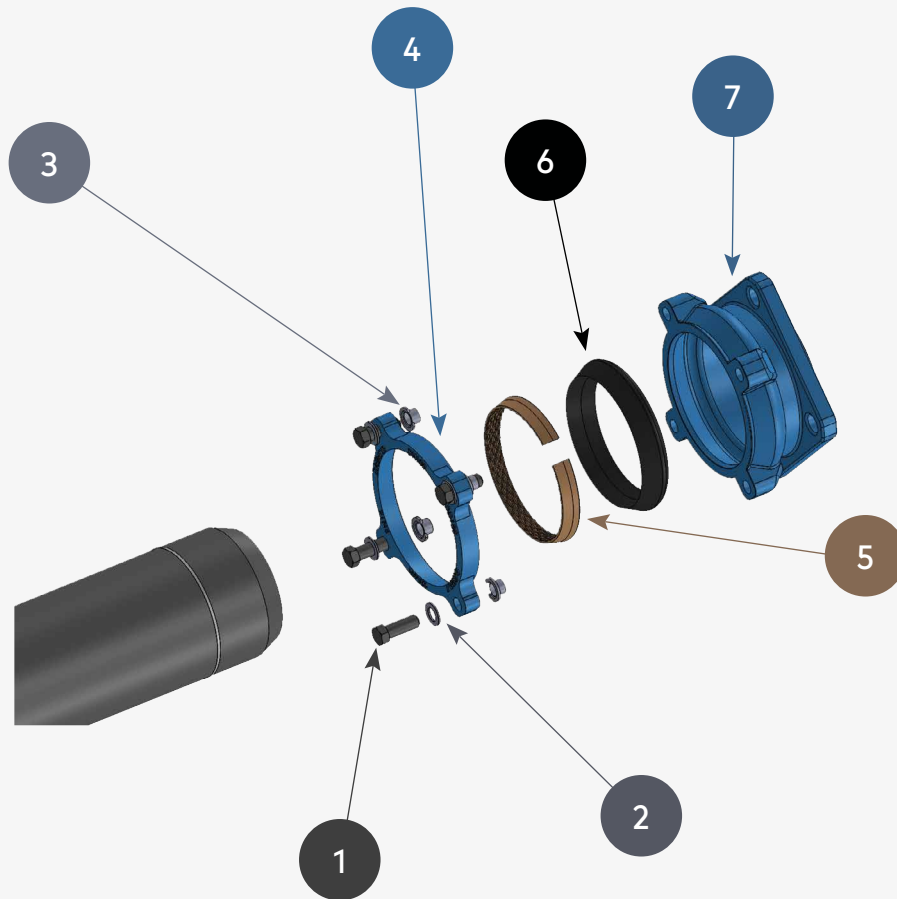
VALVES AND FITTINGS PROVIDING FULL RESTRAINT OF DN125 AND DN180 PE PIPE WITH OPERATING PRESSURES UP TO PN16.

The PE Restraint Joint is an easy and quick installation method for connections between PE pipes as well as PE pipes to Ductile Iron fittings. The advantages of the PE Restraint Joint is that it doesn't require any specialised equipment for installation and can be used in any weather conditions. Tightening the bolts on the End Ring clamps the Grip Ring onto the PE pipe, making a fully restrained connection. The socket uses a lip seal rubber gasket for a complete leak tight connection and only the highest grade of materials are used to ensure maximum corrosion protection.



Advantages of the PE Restraint Joint

- Fully restrained PE pipe
- Quick and easy to install
- Superior corrosion protection
- Can be installed in any weather conditions
- No specialised equipment for installation



| | | |
|---|------------------|--------------------------------------------|
| 1 | BOLTS | Stainless Steel 316, Molybdenum Delta Seal |
| 2 | WASHERS | Stainless Steel 316 |
| 3 | SPACERS | Polypropylene |
| 4 | END RING | Ductile Iron FBE Coated |
| 5 | GRIP RING | Copper Alloy |
| 6 | GASKET | EPDM |
| 7 | BODY | Ductile Iron FBE Coated |

FLANGE ADAPTORS

Design Advantage

- Push-in socket joint
- Fully restrained connection
- Flanges compliant to AS/NZS 4087



Technical Detail

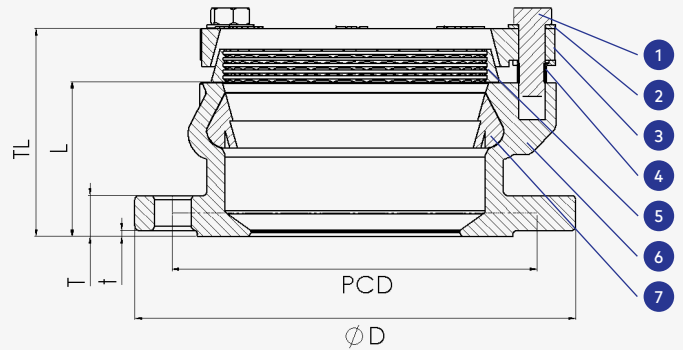
Range PE DN125/100 and PE DN180/150

Pressure PN10 to PN16 / SDR17 to SDR11

Socket Max 1.5° Deflection

Temperatures 40°C

Applications Suitable for above and below ground installations, potable water, recycled water, waste water, fire and irrigation applications



Compliance

- ISO EN 12842 Licence OMK30063
- WSAA PA 1624



| NO. | PART | MATERIAL | STANDARD |
|-----|---------------|-----------------------|-----------------------|
| 1 | End Ring Bolt | Stainless Steel, MDS* | SS316 ASTM A276 |
| 2 | Washer | Stainless Steel | SS316 ASTM A276 |
| 3 | End Ring | Ductile Iron | 500-7 AS 1831 |
| 4 | Spacer | Engineered Plastic | Polypropylene AS 1831 |
| 5 | Grip Ring | Copper Alloy | C83600 AS 1568 |
| 6 | Body | Ductile Iron | 500-7 AS 1831 |
| 7 | Socket Gasket | Rubber | EPDM AS 1646 |

* Molybdenum Delta Seal

| PE PIPE END | | | | | | FLANGE END | | | | | | | |
|-------------|----|----|-----|-----------|-----|------------|-----|-----|-----------|--------|---------------|---|----|
| DN PE | PN | L | TL | FASTENERS | | DN FL | D | PCD | QTY HOLES | HOLE Ø | FASTENER SIZE | t | T |
| | | | | SIZE | QTY | | | | | | | | |
| 125 | 16 | 77 | 110 | M12 | 4 | 100 | 215 | 178 | 4 | 18 | M16 | 3 | 20 |
| 180 | 16 | 98 | 138 | M12 | 4 | 150 | 280 | 235 | 8 | 18 | M16 | 3 | 23 |



Scan QR Code for Installation Instructions

COUPLINGS

Design Advantage

- Push-in socket joint
- Fully restrained connection



Technical Detail

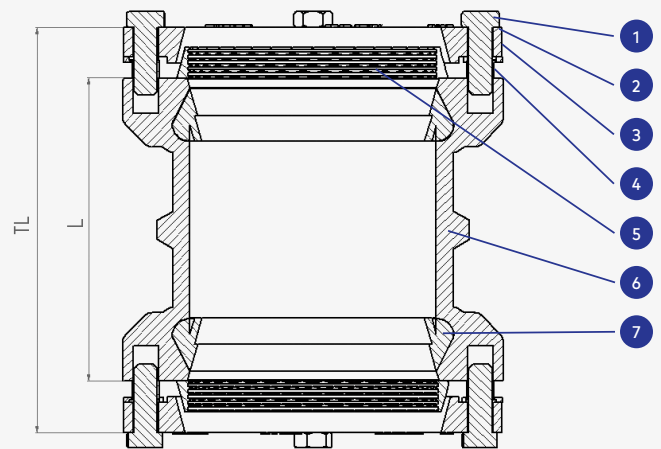
Range PE DN125 and PE DN180

Pressure PN10 to PN16 / SDR17 to SDR11

Socket Max 1.5° Deflection

Temperatures 40°C

Applications Suitable for above and below ground installations, potable water, recycled water, waste water, fire and irrigation applications



Compliance

- ISO EN 12842 Licence OMK30063
- WSAA PA 1624



| NO. | PART | MATERIAL | STANDARD |
|-----|---------------|-------------------------------------|-----------------|
| 1 | End Ring Bolt | Stainless Steel, MDS* | SS316 ASTM A276 |
| 2 | Washer | Stainless Steel | SS316 ASTM A276 |
| 3 | End Ring | Ductile Iron | 500-7 AS 1831 |
| 4 | Spacer | Engineered Plastic Polypropylene | AS 1831 |
| 5 | Grip Ring | Copper Alloy | C83600 AS 1568 |
| 6 | Body | Ductile Iron | 500-7 AS 1831 |
| 7 | Socket Gasket | Rubber | EPDM AS 1646 |

* Molybdenum Delta Seal

| DIMENSIONS | | | | | |
|------------|----|-----|-----|----------|-------|
| DN | PN | L | TL | FASTENER | |
| | | | | SIZE | QTY |
| 125 | 16 | 134 | 202 | M12 | 4 X 4 |
| 180 | 16 | 185 | 260 | M12 | 4 X 4 |



RESILIENT SEAT GATE VALVES

Design Advantage

- Push in socket joint
- Fully restrained connection
- Full vulcanized ductile iron encapsulated wedge
- Smooth opening and closing operation
- Full bore waterway

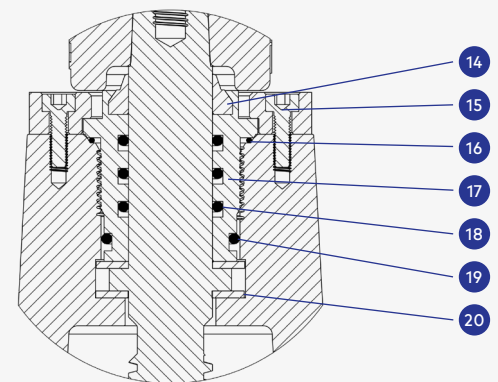
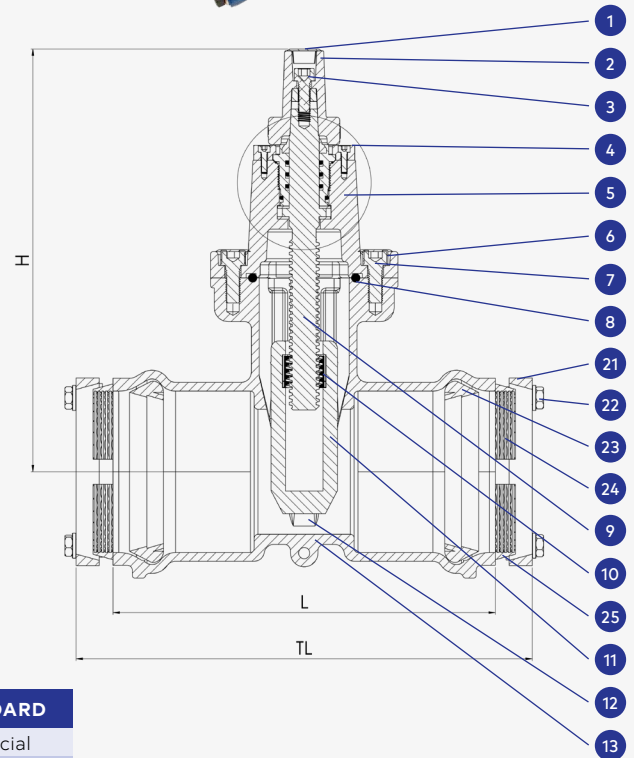


Technical Detail

| | |
|---------------------|---------------------------------------------------------------------------------------------------------------------------------|
| Range | DN125 and DN180 |
| Pressure | PN10 to PN16 / SDR17 to SDR11 |
| Temperatures | 40°C |
| Applications | Suitable for above and below ground installations, potable water, recycled water, waste water, fire and irrigation applications |
| Closing | Anti-Clockwise (ACC) / Clockwise Closing (CC) |
| Options | Handwheel |

Compliance

- AS/NZS 2638.2 Licence WM-22535 and OMK22535
- ISO EN 12842 Licence OMK30063
- WSAA PA 1624 / WSAA PA 1517



| NO. | PART | MATERIAL | STANDARD |
|-----|----------------------|-----------------------------------|--------------------|
| 1 | Dust Cap | Plastic Nylon 66 | Commercial |
| 2 | Valve Cap | Ductile Iron 500-7 | AS 1831 |
| 3 | Valve Cap Bolt | Stainless Steel SS316 | ASTM A276 |
| 4 | Gland Flange | Stainless Steel SS316 | ASTM A276 |
| 5 | Bonnet | Ductile Iron 500-7 | AS 1831 |
| 6 | Bonnet Bolt Infill | Hot Melt | |
| 7 | Bonnet Bolt | Stainless Steel SS316 | ASTM A276 |
| 8 | Bonnet O-Ring | Rubber EPDM | AS 1646 |
| 9 | Stem | Stainless Steel SS431 | ASTM A276 |
| 10 | Driving Nut | Copper Alloy C83600 | AS 1568 |
| 11 | Wedge | Ductile Iron 500-7 Rubber EPDM | AS 1831 AS 1646 |
| 12 | Nylon Guide | Engineered Plastic Nylon 66 | Commercial |
| 13 | Body | Ductile Iron 500-7 | AS 1831 |
| 14 | Scraper Seal | Engineered Plastic Nylon 66 | Commercial |
| 15 | Gland Flange Bolt | Stainless Steel SS316 | ASTM A276 |
| 16 | Gland O-Ring A | Rubber NBR | AS 1646 |
| 17 | Gland Nut | Copper Alloy C83600 | AS 1568 |
| 18 | Gland O-Ring B | Rubber NBR | AS 1646 |
| 19 | Gland O-Ring C | Rubber NBR | AS 1646 |
| 20 | Thrust Washer | Engineered Plastic Nylon 66 | Commercial |
| 21 | End Ring | Ductile Iron 500-7 | AS 1831 |
| 22 | End Ring Bolt/Washer | Stainless Steel, MDS* | SS316 ASTM A276 |
| 23 | Socket Gasket | Rubber EPDM | AS 1646 |
| 24 | Grip Ring | Copper Alloy C83600 | AS 1568 |
| 25 | Spacer | Engineered Plastic Polypropylene | Commercial |
| * | Lifting Lugs | Steel Galvanized | Commercial |

* Molybdenum Delta Seal

| DETAILS | | | |
|----------|-----|-----|-----|
| DN | L | TL | H |
| 100/125 | 306 | 376 | 325 |
| 150/180* | 394 | 477 | 400 |



Scan QR Code for Installation Instructions



DAEMCO
daemco.com.au 03 9863 6838
2 / 7-9 Clarissa Street, Campbellfield, 3061

**PARTNERING WITH OUR
CUSTOMERS TO DELIVER
END TO END SOLUTIONS**



www.daemco.com.au



VALVES



COUPLINGS



ACCESSORIES



PE DI FITTINGS



COVERS



BANDS

65 Assembly Drive, Tullamarine VIC 3043
1800 323 626 | enquiries@daemco.com.au

Follow us on **LinkedIn**

©Copyright 2018. All Rights Reserved. Daemco Australia reserve the right to change designs and specifications without notice, warranties for suitability for use, liability or loss, damage or costs incurred relating to this information is excluded.