



INSTALLATION INSTRUCTION PE RESTRAINT JOINT

Phone: +61 3 9863 6838 Email: enquiries@daemco.com.au



Version 1.0

VALVES AND FITTINGS PROVIDING FULL RESTRAINT OF DN125 AND DN180 PE PIPE WITH OPERATING PRESSURES UP TO PN16.

The PE Restraint Joint is an easy and quick installation method for connections between PE pipes and PE pipes to ductile iron fittings. The advantages of the PE Restraint Joint is it doesn't require any specialised equipment or skills for installation and it can be used in any weather condition. Tightening the bolts will clamp the grip ring onto the PE pipe making a fully restrained connection. The socket uses a lip seal rubber gasket for a complete leak tight connection and only the highest grade of materials are used to ensure maximum corrosion protection.

EQUIPMENT

1. TORQUE WRENCH
2. LUBRICANT - APPROVED FOR POTABLE WATER



Table 1

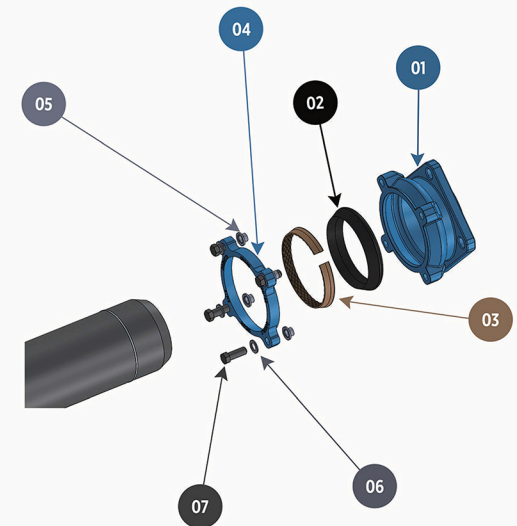
FLANGE ADAPTOR		
DN	W (MM)	L (MM)
125	100	15
180	135	24

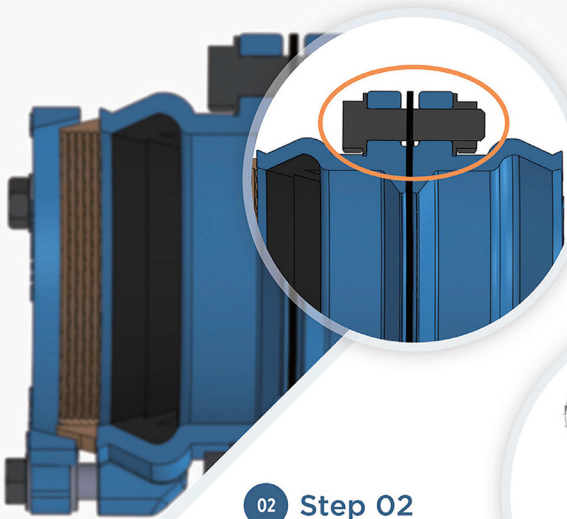
COUPLING		
DN	W (MM)	L (MM)
125	95	15
180	130	24

VALVE		
DN	W (MM)	L (MM)
125	140	15
180	180	24

BILL OF MATERIALS

- 01 BODY
- 02 GASKET
- 03 GRIP RING
- 04 END RING
- 05 SPACERS
- 06 WASHERS
- 07 BOLTS



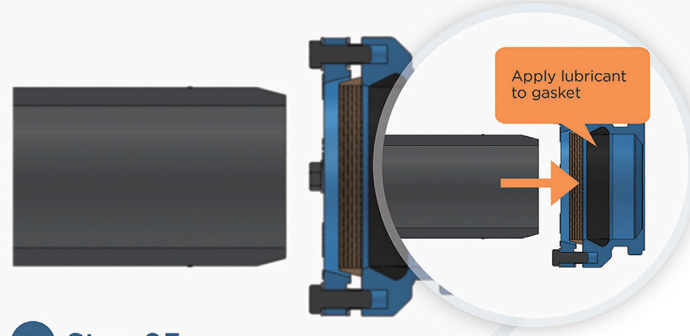
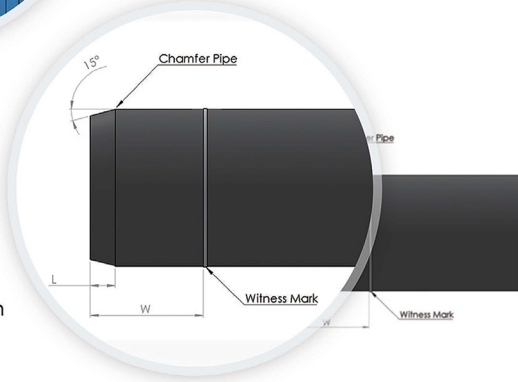


01 Step 01

For PE Restraint flange adaptors, bolt the flange to the mating flange first. For valves and couplings start from **step 02**.

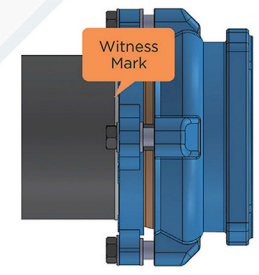
02 Step 02

Chamfer the pipe and draw a witness mark on the pipe using the measurements detailed in Table 1.



03 Step 03

Lubricate the gasket then push the pipe into the socket up to the witness mark. Only use approved lubricant.

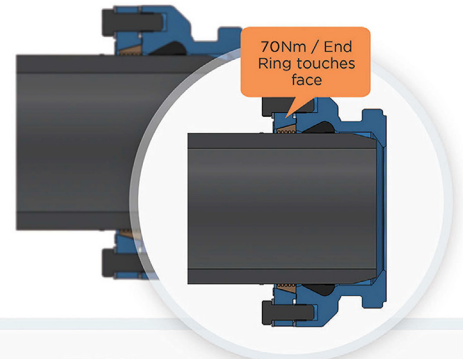


04 Step 04

Ensure the pipe has been pushed up to the witness mark

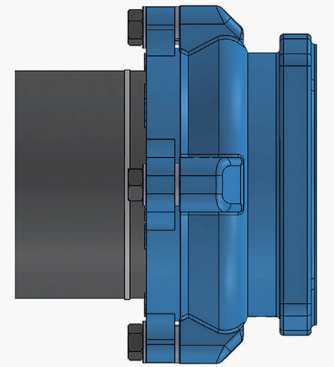
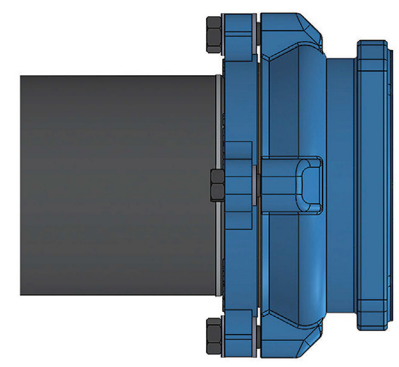
05 Step 05

Tighten end ring bolts in a diametric sequence in small increments. Torque to 70Nm or until end ring touches socket face.



06 Step 06

Installation Complete.



Note:

The witness mark may become exposed if the end ring pulls closer to the body after the end ring bolts have been tightened which is acceptable providing all previous steps have been followed.

